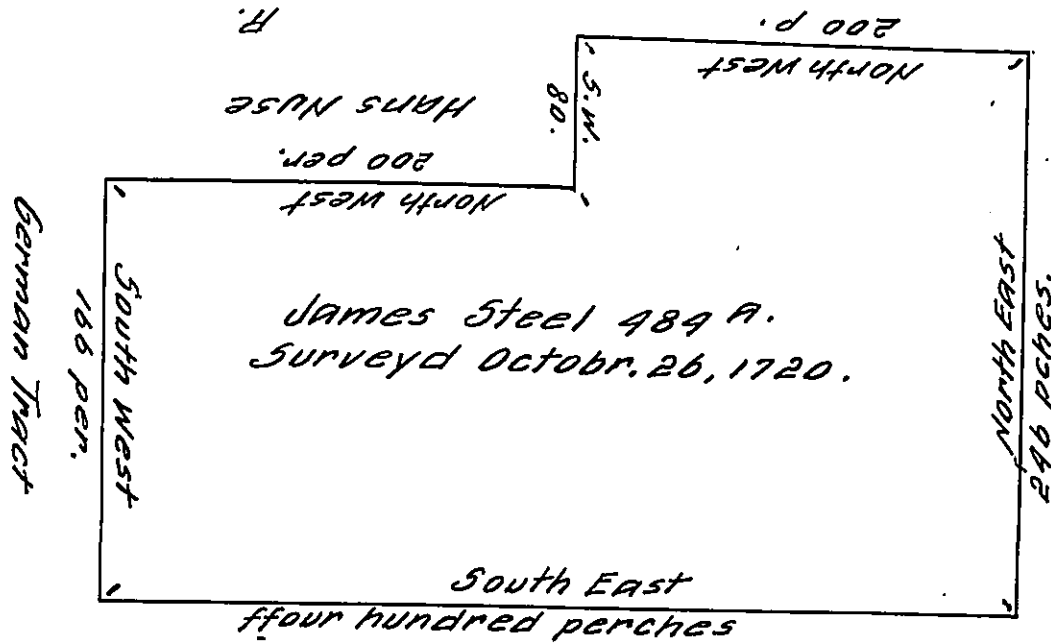


7/21/2

Henry Grubb & Hans Nuse



424-400
91 86
8
82400/515
492
33200

South East
four hundred perches
John Hagerman Henry ffry.

whereas the Commissioners of Property by their warrant dated the day of _____ Granted to Israel Pemberton^{son of} four hundred and eighty four acres of Land to be Surveyd to him in Right of James Dilworth who sold the same to ^{John Horner who afterwards sold to} Phineas Pemberton father of the said Israel And whereas the said Israel Pemberton by his Deed dated the tenth day of March 1719 Conveyd the said four hundred and eighty four acres to James Steel of Philadelphia.
These may Certifie^{that} on the 26th day of October 1720 there was Surveyd and Laid out to the said James Steel a Tract of Land in the County of Philadelphia Beginning at a post at a Corner of John Hagerman's land Thence by the same and Andrew ffrey's land South East four hundred perches to a post Thence North East two hundrd. forty six perches to a post Thence by the lands of Henry Grubb and Hans Nuse. North West two hundred perches to post Then by the said Hans Nuse's land South West eighty perches to a Corner Marked Black Oak Then North West by another Line of the said Hans Nuse's land ~~North West~~ two hundred perches to a post Then by the German Tract South West one hundred sixty six pches to the Place of Beginning Containing four hundred eighty four acre with allowance of six acres per Cent.
Returned into the Secretary's Office the fourth Day of January 1720
21

by Jacob Taylor

IN TESTIMONY that the above is a copy of the original remaining on file in the Department of Internal Affairs of Pennsylvania, made conformably to an Act of Assembly approved the 16th day of February, 1833, I have hereunto set my Hand and caused the Seal of said Department to be affixed at Harrisburg, this twelfth day of December 1920

Henry Aouch
Secretary of Internal Affairs.